



CENTRE FOR RENEWABLE AND SUSTAINABLE ENERGY STUDIES

GUEST LECTURE

Professor Matthew Kuperus Heun
Faculty of Engineering, Calvin College, USA

Energy and the Economy: Five Propositions

DATE: 16h00 – 18h00, Friday 19 August 2016

VENUE: Sustainability Institute, Lynedoch, Stellenbosch

Prof. Heun is currently on sabbatical from Calvin College in Grand Rapids, Michigan, USA, where he is a professor at the faculty of engineering. Prof. Heun spent the first five months of 2016 in Ghana with his family and will be in Stellenbosch until the end of August.

Prof. Heun graduated from Calvin College with a BSE in 1989. He completed his M.S. in Mechanical Engineering in 1990 and finished his Ph.D. in 1995, both at the University of Illinois.

[Read more >](#)

A general discussion on the topic will be facilitated after the presentation.

All academic staff and students, representatives from the public and private sectors as well as the general public are welcome to attend.

Please **RSVP** by **5 August 2016** to crses@sun.ac.za.

SEE DIRECTIONS BELOW

DIRECTIONS TO THE SUSTAINABILITY INSTITUTE

GPS COORDINATES 33°58'56.7"S 18°46'07.4"E

FROM STELLENBOSCH – (via Vlottenburg Road - refer to *Figure 1* below)

There are two routes, i.e.

- via the R310/Baden Powell Drive: Turn right into Vlottenburg Road at Vlottenburg Station/Stellenbosch Hills Winery; after ± 70 m turn left and continue to Lynedoch;
- via the M12/Polkadraai Road: Turn left into Vlottenburg Road; at ± 60 m from the intersection with R310 turn right and continue to Lynedoch. From a safety perspective this is a better option because you don't have to cross the oncoming traffic on the R310.

FROM SOMERSET WEST/ANNANDALE ROAD – (via Vlottenburg Road - refer to *Figure 1* below)

Turn right at the intersection with Baden Powell R310, drive past Spier and reach Vlottenburg Station. Turn left onto Vlottenburg Road; after ± 60 m turn left and drive back to Lynedoch

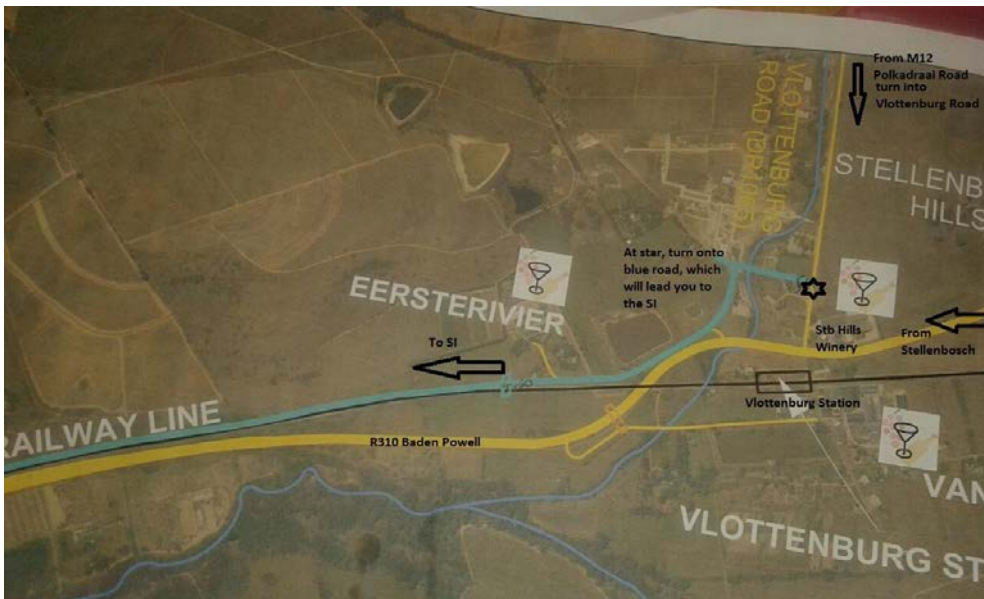


Figure 1: Stellenbosch to SI

FROM CAPE TOWN

- Until the construction of the bridge near Lynedoch, in the direction of Cape Town, has been completed (i.e. a couple of days to a week) all motor vehicles coming from Cape Town on the R310 will have to gain access from the Vlottenburg road opposite Vlottenburg station and drive all the way back towards the Sustainability Institute and Lynedoch Eco-village (refer to *Figure 1* above).
- Upon completion of the bridge – turn left from R310 into new road (pink in *Figure 2*), go over the bridge, turn right and continue to Lynedoch (refer to *Figure 2* below)

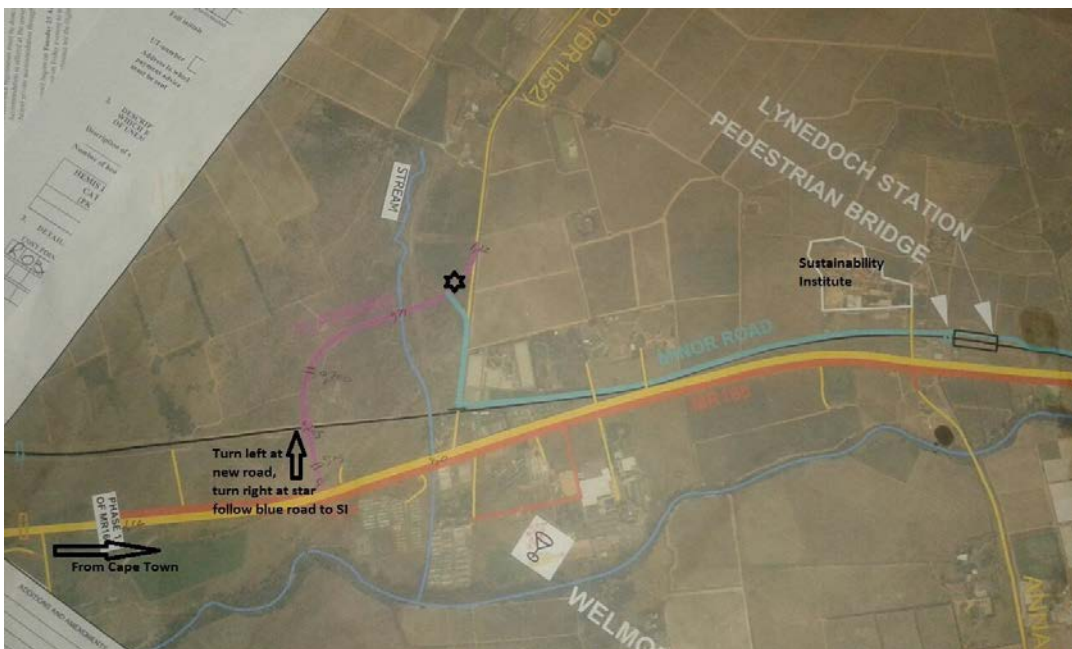


Figure 2: Cape Town to SI